

Little Giant®

Ladder Systems

FOOT REPLACEMENT, SAFETY STEP

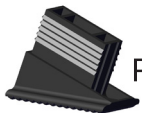
READ THESE INSTRUCTIONS COMPLETELY BEFORE YOU START. IF YOU DON'T UNDERSTAND THESE INSTRUCTIONS, PLEASE CALL 800-453-1192 FOR ASSISTANCE

1. Failure to comply with all instructions may result in serious injury.
2. Make sure this kit is compatible with your ladder. Before installing this kit, identify all kit components. If any components are missing, damaged or if you have any questions concerning the use of this kit on Little Giant Ladder Systems® products, please contact our Customer Experience Team at 800-453-1192. Do not substitute any components.
3. Inspect the ladder before installing this kit. Repair or replace any damaged or missing parts before using the ladder. Use only Little Giant Ladder Systems® replacement parts. If you are unable to repair it, discard the ladder.

COMPONENTS INCLUDED



FRONT FOOT 50308 [2]



REAR FOOT 50306 [2]



POP RIVET [4]

TOOLS REQUIRED



PLIERS



DRILL WITH
3/16" BIT



HAMMER



SCISSORS



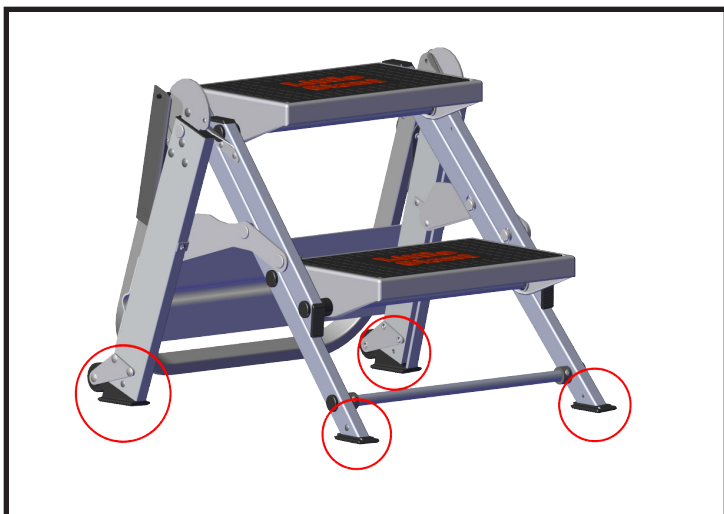
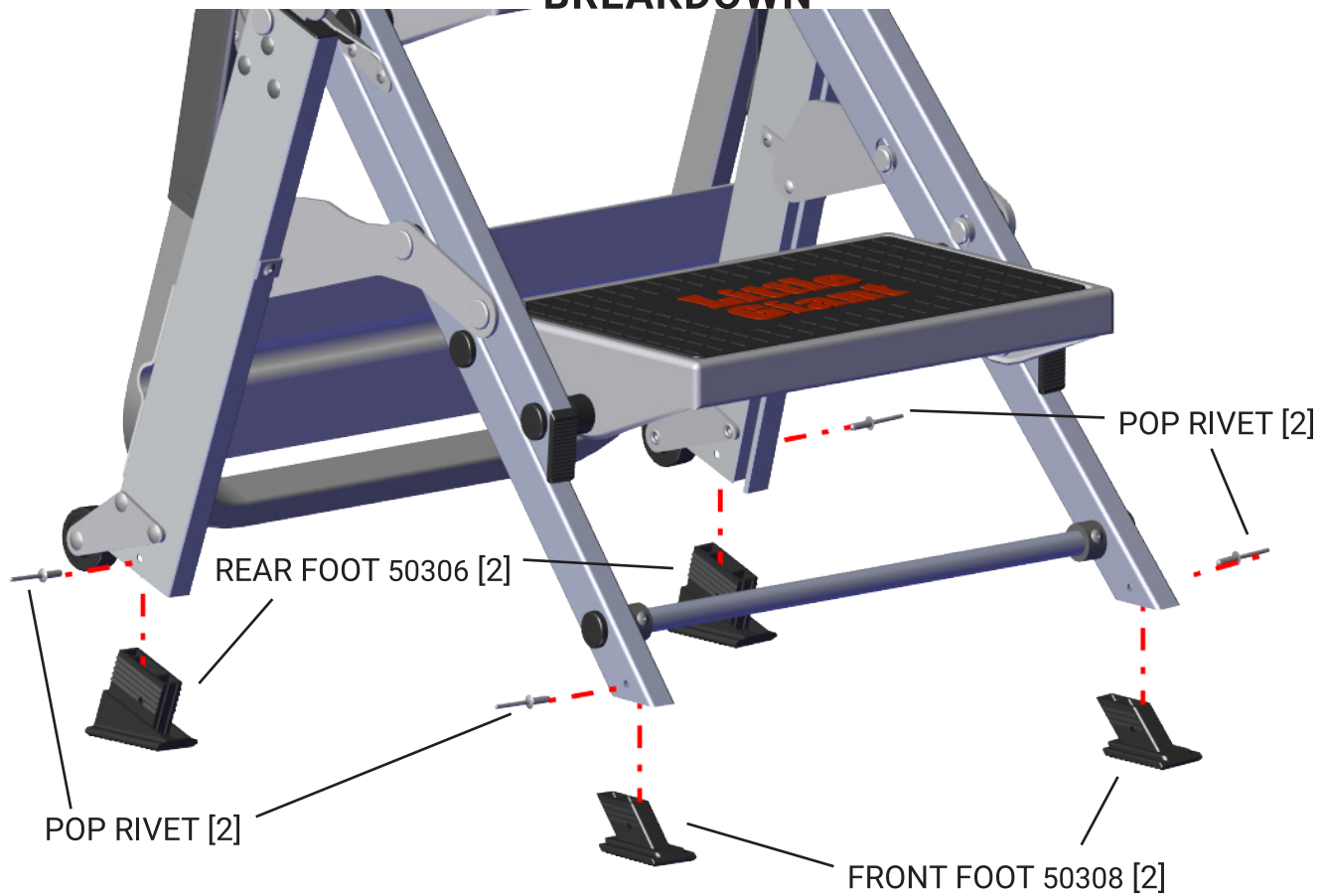
3/16" PUNCH



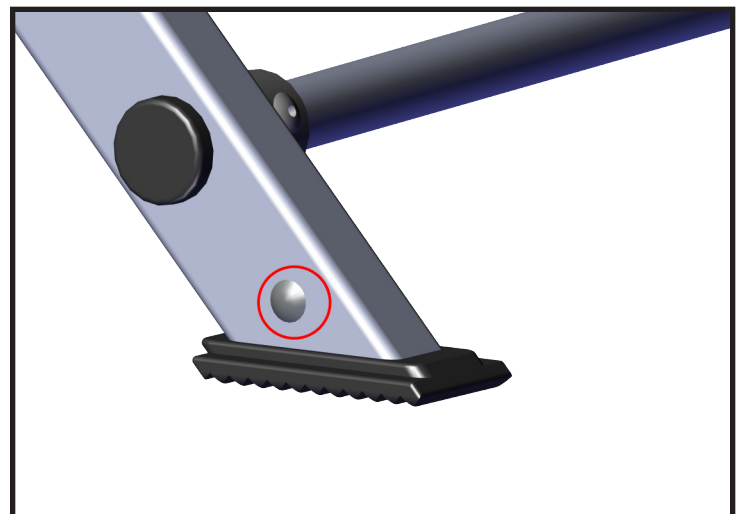
CHISEL

NOTE: IF ANY OTHER PART OF THE LADDER IS DAMAGED BEFORE OR DURING THE PROCESS OF INSTALLING AND/OR REPAIRING, Please contact our customer experience team for assistance at 800-453-1192.
DO NOT USE A DAMAGED LADDER!

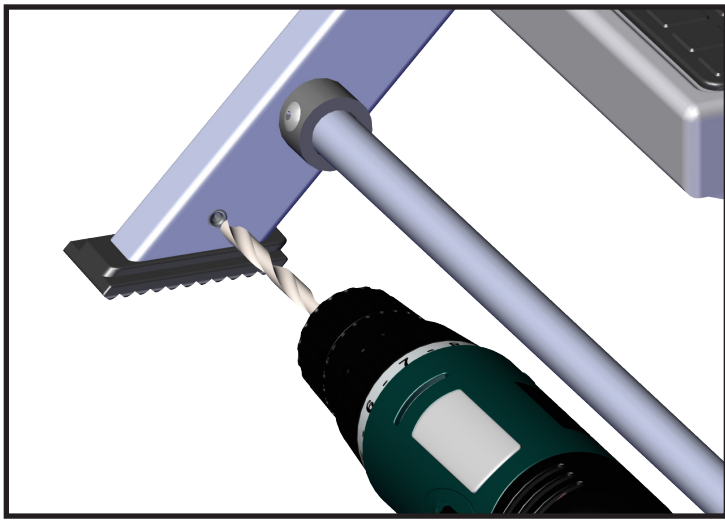
BREAKDOWN



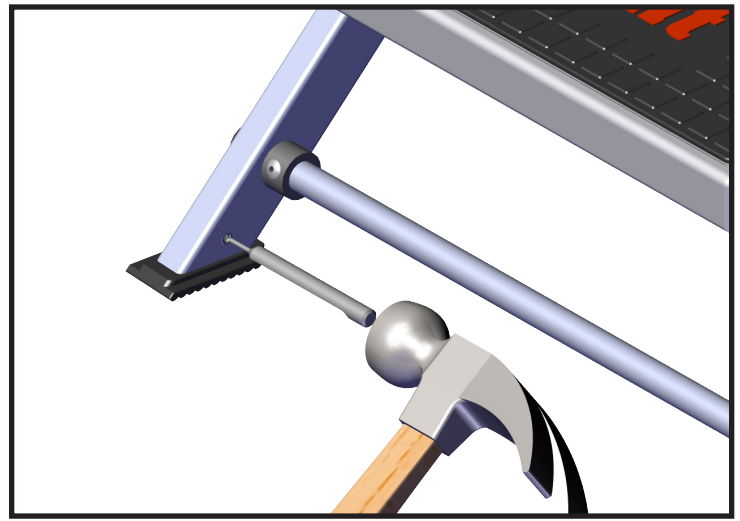
1. Locate the front and rear feet that will be replaced.



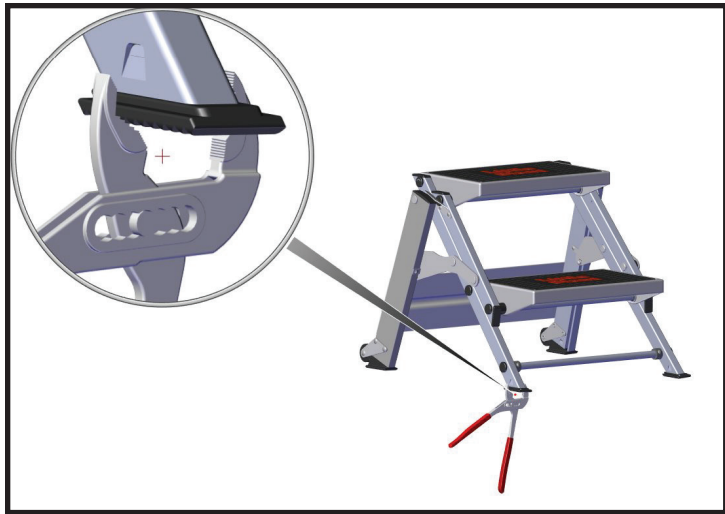
2. Check to see if the feet are secured by rivets. If not proceed to step 5.



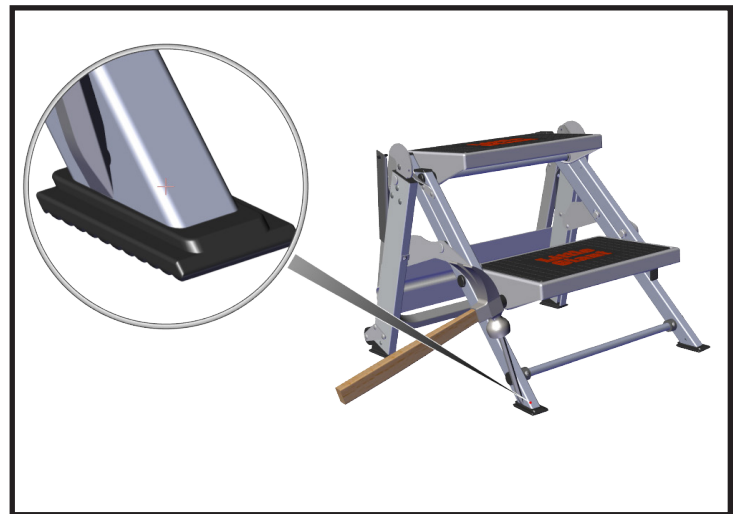
3. Using a 3/16" drill bit, drill the bottom side of the rivet in preparation for removal.



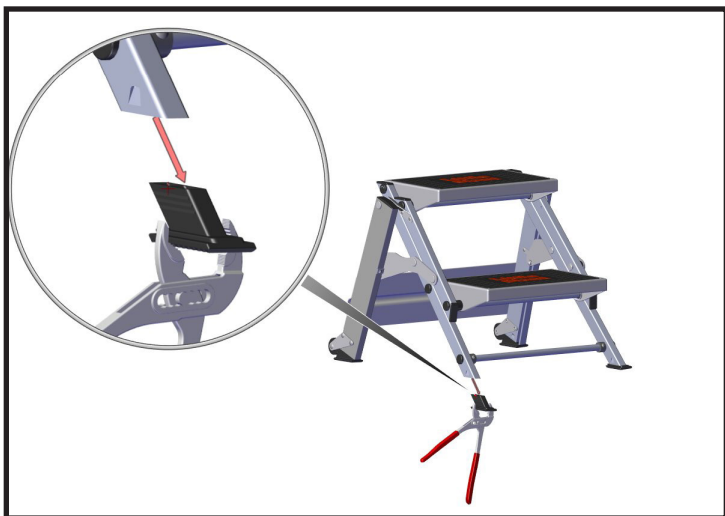
4. Using a punch and hammer, tap the remainder of the rivet to remove and discard the old rivet.



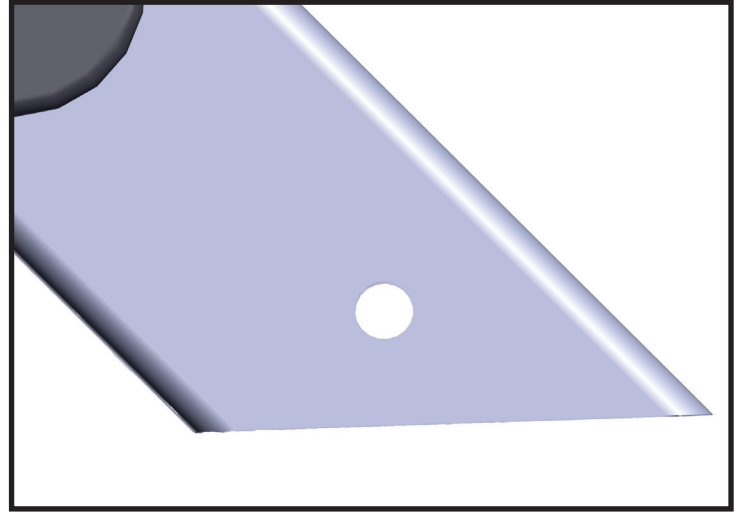
5. With a pair of pliers, firmly grasp the foot and pull the foot until it is released.



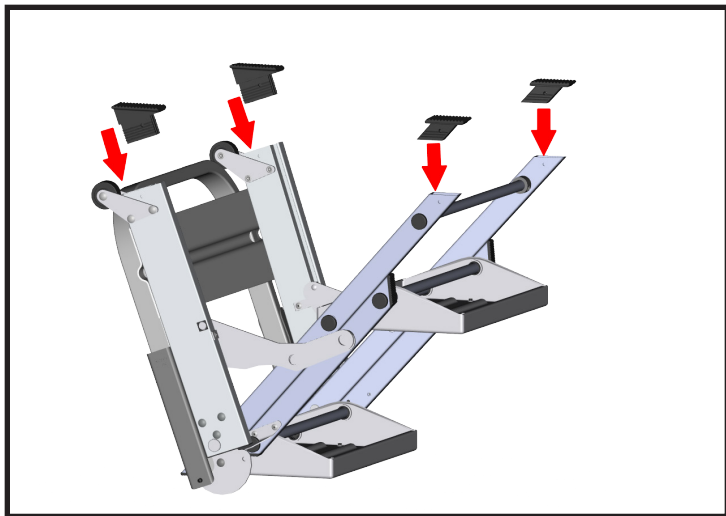
6. If the foot fails to release, take the chisel and hammer and lightly tap the lip of the foot to help loosen it.



7. Alternate between steps 5 and 6 until the foot is completely separated from the ladder. Discard the removed feet.



8. If your ladder does not have rivet holes for the feet, use scissors and cut out the templates on page 5. Match up the templates inline with the bottom angle of the rail. Use a 3/16" drill bit and drill through both sides of the rail on all four legs for the rivet. If your ladder already has rivet holes for the feet, skip to step 9. 53714 v3 11.22 (3)



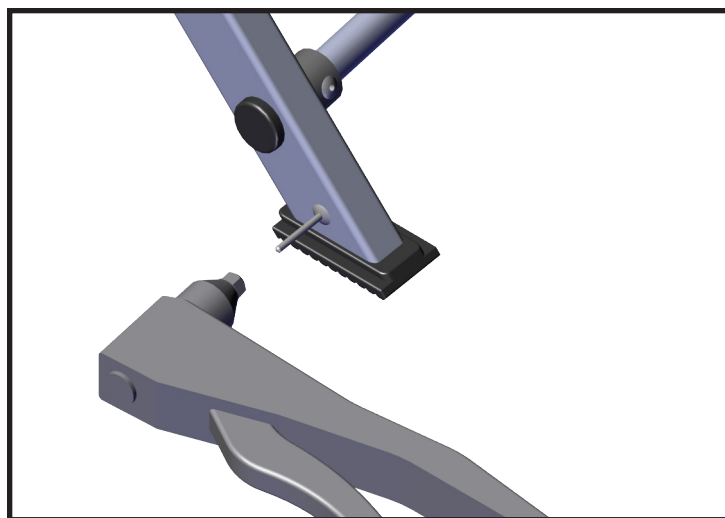
9. Next, insert the two new 50306 and two 50308 feet (as shown in illustration).



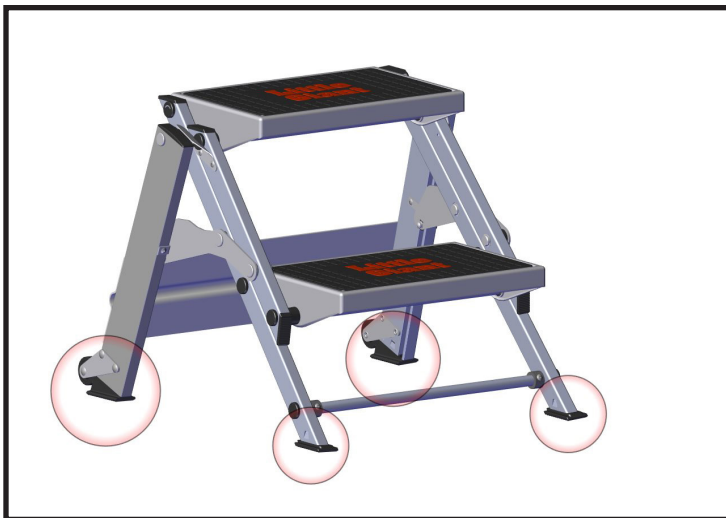
10. Lightly tap each foot, with a hammer, tightly into place.



11. Insert the 50415 pop rivet into the rivet hole on the outside of the rail. Use 1 rivet per foot.



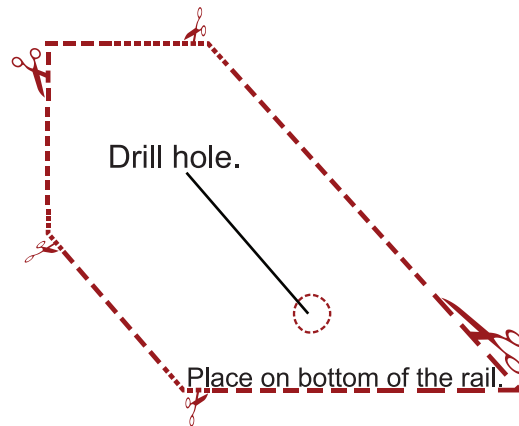
12. Make sure the rivet head is parallel with the leg, use a rivet gun to secure all four new feet into place.



13. All four feet must be replaced at the same time. Once the feet are all replaced, stand the ladder up and make sure that it is stable before use.

Safety Step Drill Template

Front Feet



Back Feet

